

O.K.

3D, 11D, 2D, 10D

3G, 11G, 2G, 10G

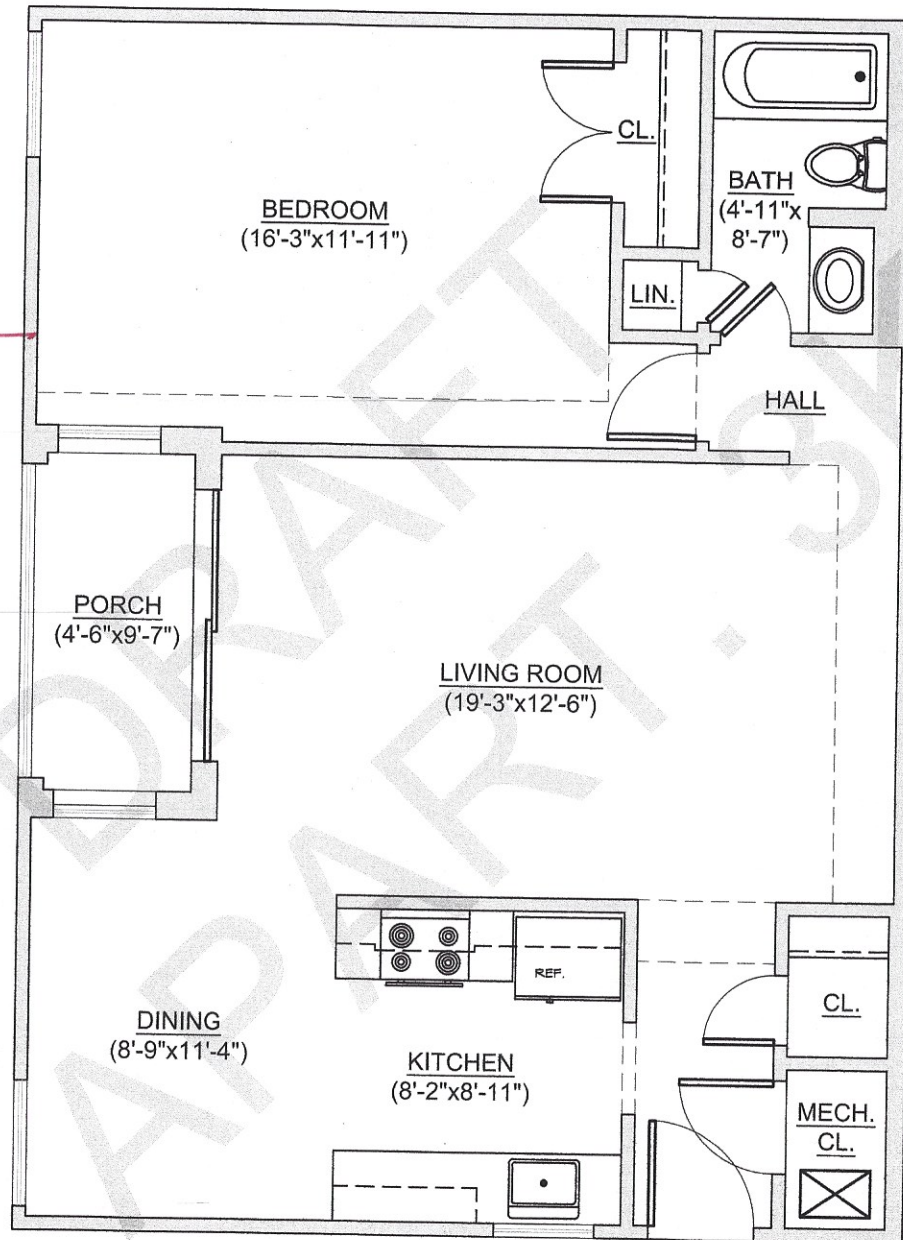
3K, 11K, 2K, 10K

FLIP/REVERSE FOR

1D, 9D, 4D, 12D

1G, 9G, 4G, 12G

1K, 9K, 4K, 12K

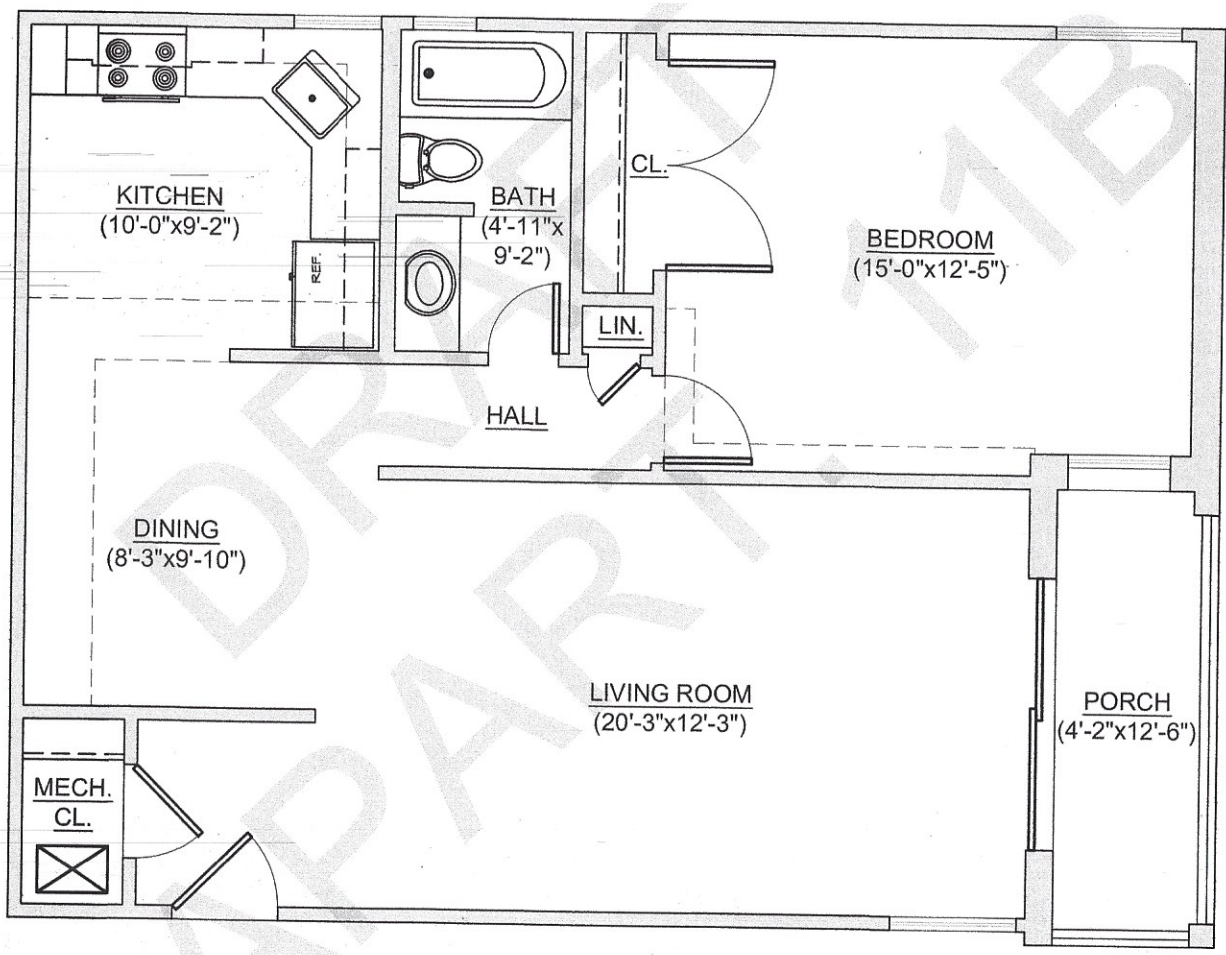


TOTAL LIVING SPACE:	838 S.F.
NUMBER OF BEDROOMS:	1
NUMBER OF BATHROOMS:	1

OK
 • 5B, 11B
 • 4C, 10C
 6F, 14F
 6J, 14J
 6M, 14M

REVERSE/FLIP

• 3B, 9B
 • 6C, 12C
 5H, 13H
 5L, 13L
 5E, 13E



TOTAL LIVING SPACE:	830 S.F.
NUMBER OF BEDROOMS:	1
NUMBER OF BATHROOMS:	1